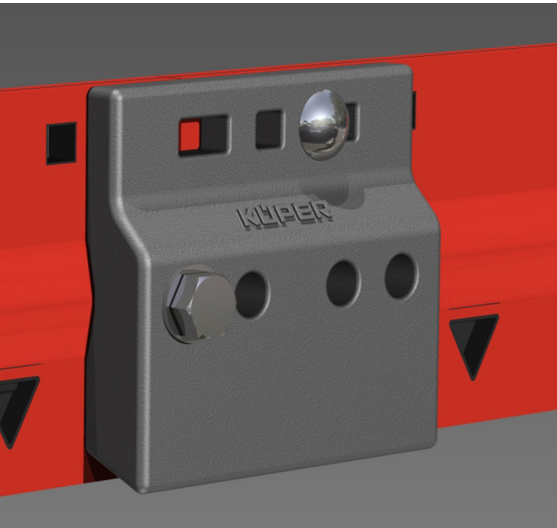




Wear Systems and Protection for TUCA SX Wave Blade Saver XC Plate and Blade Saver XC Plus



Innovation in Motion: TUCA SX Wear Protection

A SUPERB COMBINATION OF PROTECTION AND ENHANCED WEAR LIFE FOR ALL TYPES OF SNOWPLOWS AND ROAD SURFACES – WITH “XTREME” CAST COMPOSITION

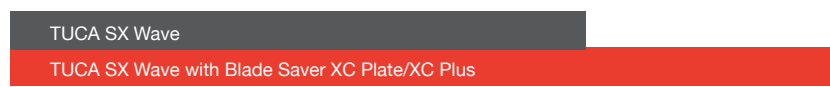
New standards in blade protection!

A state-of-the-art, high performance blade protection system designed for extreme use exclusively for the Kueper TUCA SX Wave Flexible Carbide System. Use the Kueper Blade Saver XC Plus system to guard either blade end against side impact or in higher speed applications for crossing expansion joints, etc. The Kueper Blade Saver XC Plate may be used in conjunction with the “Plus” system or on its own, either on the ends of the blade, in the middle straddling section seams, or both. (NOTE: Due to plow configuration, the “XC plus” system may only be fitted to power angle or reversible plows. The “XC plate” version may be used on both fixed and reversible plows.) As with the “Plus” system, the benefits are the same; enhanced longevity, protection against obstacles and uneven wear and added strength.

Durability
TUCA SX Wave +
Blade Saver XC Plate
/ XC Plus

Top performance in combination: Kueper
TUCA SX Wave lasts up to 30% longer
in combination with Blade Saver XC Plate
and XC Plus

+30%



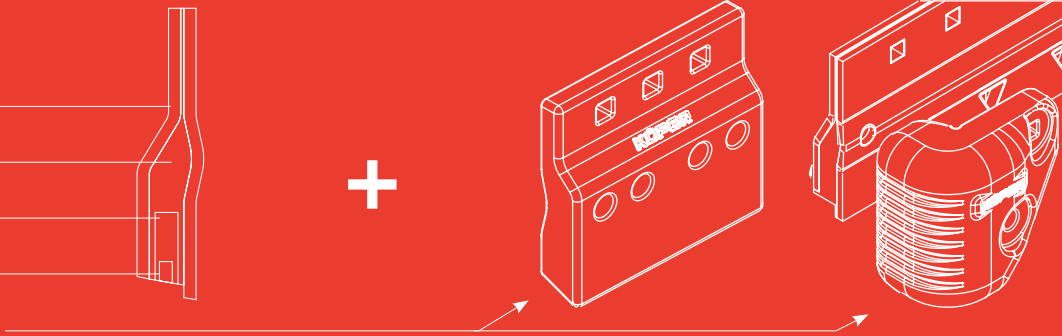
Features and Benefits:

- ✓ Extends life of Tuca SX system 20–30%
- ✓ Guards against curb / edge impacts
- ✓ Acts as integrated wear shoe
- ✓ Assists in gliding over expansion joints
- ✓ Adds strength to section seams
- ✓ May be used to help counter uneven blade wear (leading / trailing edge, crown, etc.)
- ✓ One-way / High Discharge plows: Blade Saver XC Plate
- ✓ Reversible / Power Angle plows: Blades Saver XC Plate and XC Plus



Materials

- Steel
- Rubber
- Steel
- Tungsten carbide
- Extreme cast



Technology

- Extreme Cast Material
- Conforms to fit TUCA SX Wave
- Combination wear products:
 - ✓ Protects end of blades
 - ✓ Protects against odd wear patterns
 - ✓ Adds to the life of the blade system

Mounting and Operating Instructions

- Install when blades are new or if uneven wear occurs due to conditions
- Detailed mounting and installation instructions supplied with every kit
- Do not mount if blades are already too worn as could bridge the plow, preventing scraping

Areas of use



Motorway



Country road



City

WEAR TECHNOLOGY

Kueper North America, LLC, 171 Church Street, Suite 300
Charleston, SC 29401, info@kueperblades.com

843.345.6788
www.kueperblades.com

